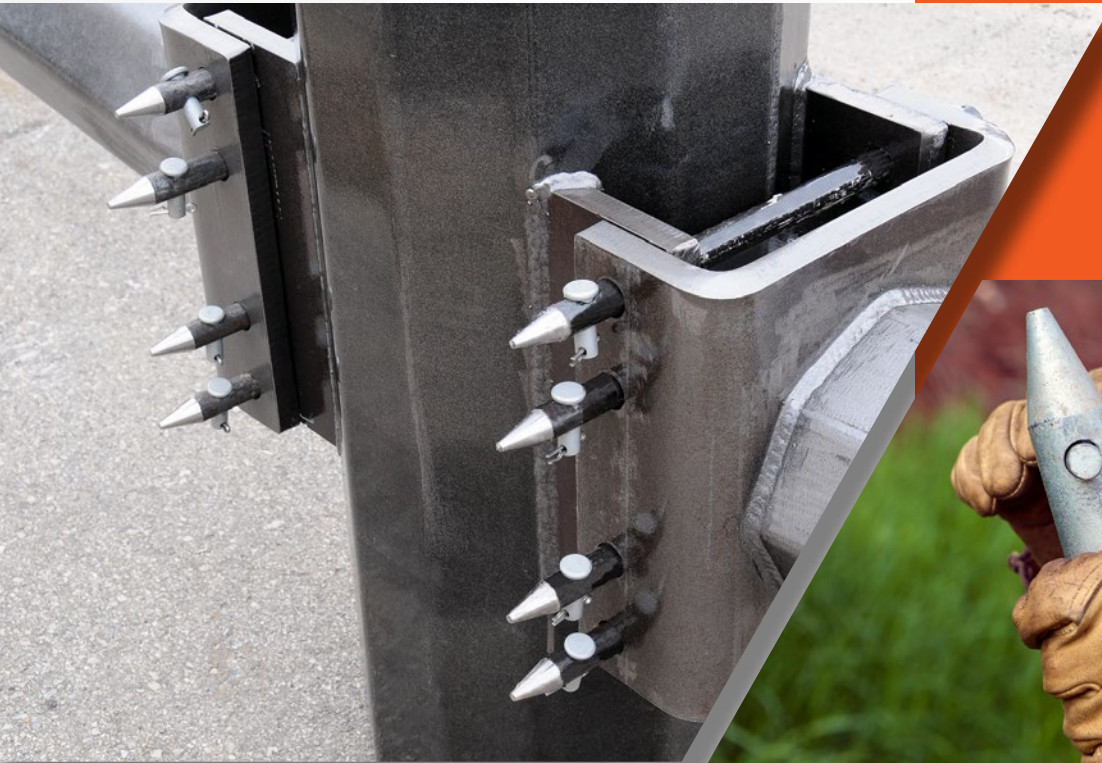


MEYER

UTILITY STRUCTURES

World's Fastest Arm Connection

QUICKPIN™
The Revolutionary Arm Connection



How Does it Work?

Traditional arm connections require the thru-plates or wrap connection plates to be bolted to the arm brackets using multiple short bolts and nuts, often up to 1½" in diameter, that can be expensive and hard to get. They require the nuts to be tightened using the "turn of the nut" method and often require the use of cheater bars or torque multipliers to pull the connection plates into contact. Usually these connections are inspected to assure adequate contact.

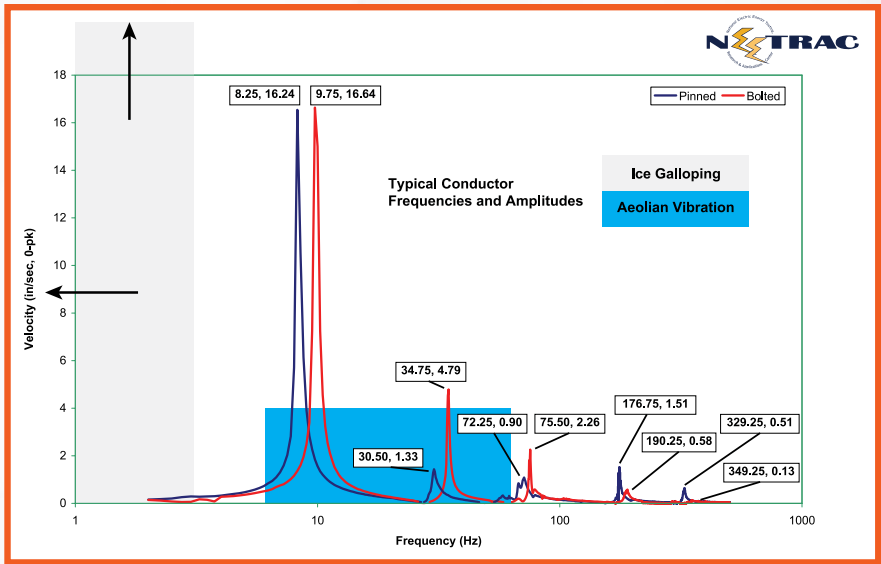
This new Meyer proprietary technology uses fewer long unthreaded tapered pins for a faster connection.

- Save Labor
- Use Less Equipment
- Reduce Inspection Costs
- Save Construction Time
- Energize Faster
- Vibration-tested by NEETRAC

Engineering Specifications
AISI 4140/4340 Modified

The new Meyer QUICKPIN™ Arm Connection System will save you money and let you energize your line faster.

NEETRAC tests confirm QUICKPIN™ connections perform identically to bolted connections in Vibration, Noise and Wear



"The old way would take 4 to 5 guys to install the arms on maybe 4 or 5 poles in one day. This way, the arm install crew is down to 3 guys and they can get up to 10 poles done on a really good day. The equipment is also a lot less. This new connection is a winner."

QUICKPIN™
The Revolutionary Arm Connection

Recent Meyer Customer

QUICKPIN™ connection installs in one-third the time of bolted connections



Traditional Bolted Connection

120
MINUTES



QUICKPIN™ Connection

35
MINUTES

MEYER

UTILITY STRUCTURES

Meyer Utility Structures, LLC
6750 Lenox Center Court, Suite 400
Memphis, TN 38115

1-800-501-0962
www.arcosa.com